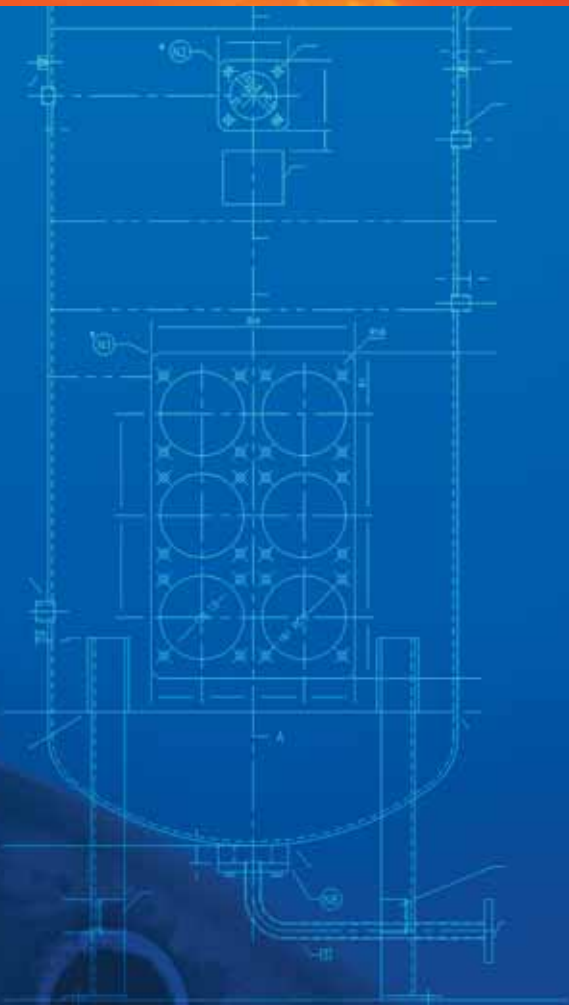


# HOT WATER BOILERS, STEAM BOILERS, COMMERCIAL SOLAR & WARM WATER SYSTEMS



Gas Hot Water Boilers

Electric Hot Water Boilers

Electric Steam Boilers

Gas Steam Boilers

Commercial Hot Water

Commercial Solar

Warm Water Systems

Humidifiers

Heat Exchangers

Storage Tanks

**SIMONS**

[www.simonsboiler.com.au](http://www.simonsboiler.com.au)

**BOILER Co.**

# THERMOTECH WATERTUBE STEAM BOILERS GAS/DIESEL FIRED

THERMOTECH is a specialist boiler manufacturing company set up specifically for the manufacturing of boilers, pressure vessels and ancillary equipment. Today Thermotech manufactures a range of watertube steam boilers up to 10MW, servicing a broad range of clients throughout Australia, New Zealand, Asia and the Middle East.

Thermotech boilers offer a competitively priced package, fitted with unique innovative features. All products comply with the relevant standards.

## THERMOTECH VWT - 6HP to 150 HP

Today's Thermotech VWT range of packaged steam boilers are the product of many years of development, that has been heavily influenced by market requirements, and loaded with features and system options to meet the client's specification.

All Thermotech boilers are manufactured to the highest standard, with the boiler pressure vessel undergoing 100% non destructive testing during manufacture (the results of which are supplied with the boilers manufacturers data report at time of manufacture). The VWT boilers have a standard design pressure of 1050Kpa.

**Thermotech boiler specifications exceed the minimum requirements of relevant codes, and compare favourably to other equipment that is available.**

**SPACE REQUIREMENTS** - The VWT range of boilers being vertical down fired design, takes a minimum of valuable floor space.

**OPERATING COSTS** are minimised with the VWT boilers, the 3 pass natural circulation water wall design will provide a guaranteed minimum of 80% efficiency across the operating range of the boiler.

**RADIATED HEAT** is not a problem with Thermotech boilers, high quality thermal insulation is fitted to the boilers, ensuring a more comfortable workplace, and increased energy efficiency.

**QUALITY FIT OUT** of the VWT boilers has enabled a low cost low maintenance steam boiler that will provide many years of reliable service.



- LOW CAPITAL COST
- 3 PASS DESIGN
- LOW HEAT EMISSIONS
- NO BOILER TICKETS REQUIRED
- EASY TO OPERATE
- PARTS READILY AVAILABLE
- FULLY WELDED TUBES
- RAPID STARTUP SAVES TIME
- SMALL FLOOR SPACE
- QUALITY FITOUT COMPONENTS
- EASY TO SERVICE

All Thermotech boilers are engineered to provide a long service life with minimal maintenance requirements.

Thermotech boilers carry a 12 months warranty on controls and peripheral equipment, and 5 years warranty on the shell, providing the boiler is operated and maintained within relevant standards, including water treatment.



## THERMOTECH WT - (125 HP to 1000 HP)

The WT series boilers are of a robust fully welded single drum design that eliminates the need for personnel to enter the steam drum to expand tubes. The boiler, due to the water wall design does not use refractory material for baffle or combustion gas pathways.

A feature of the boiler design is the identification of the downcomers, which are external to the water wall, and pass direct from steam drum to the bottom header.

The modular construction of the boiler has the advantage that any individual tube can be removed and replaced without disturbing adjacent boiler tubes in the tube nest.

Standard approved designs cover the boiler up to 2100 kpa maximum operating pressure. However, unless otherwise specified, the boiler would be supplied to 10 Bar.

All above boilers are finished in attractive colorbond cladding that is easily removable for maintenance purposes.





Energy saving and environmental protection are fundamental to the basis of the water heater design and research. ICI CALDAIE, established in 1958, presently hold a leading position in the heating industry as a result of its ongoing research activity and development of highly reliable and advanced technology water heaters.

ICI CALDAIE produces water heaters for the domestic, commercial, and Industrial markets. Within the above markets, ICI CALDAIE have acquired an international reputation for products of the highest quality.



#### REX AND REX F MODELS - FORCED DRAUGHT BURNER

REX Standard firetube reverse flame high efficiency water heater with wet back design and high water content.

Models from 70 kW to 3500 kW with standard efficiency of 92% NET. Both Rex and Rex F models have exactly the same dimensions.

##### The Rex F range

★★★ EFFICIENCY

have a special tube system which increases the efficiency to 95% NET. This is achieved by the use of the FIN-e® system that increases the heaters efficiency up to the 3 stars level according to EN297.

Fin-e® is an aluminium extrusion, with internal fins, inserted in the rear of the firetubes. While flue gas transmits thermal energy along the finned surfaces, its own temperature is reduced before it reaches the smoke chamber and exits at the chimney at a lower temperature.

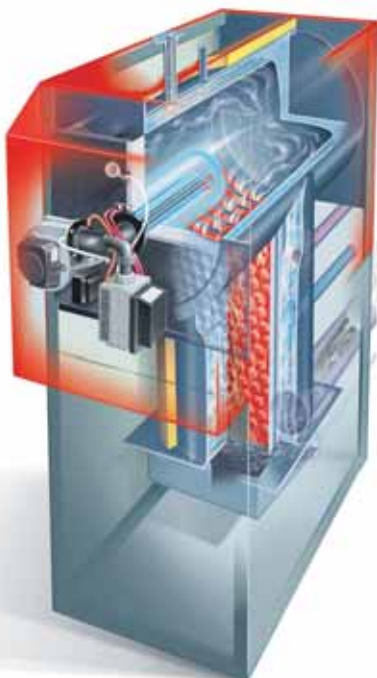
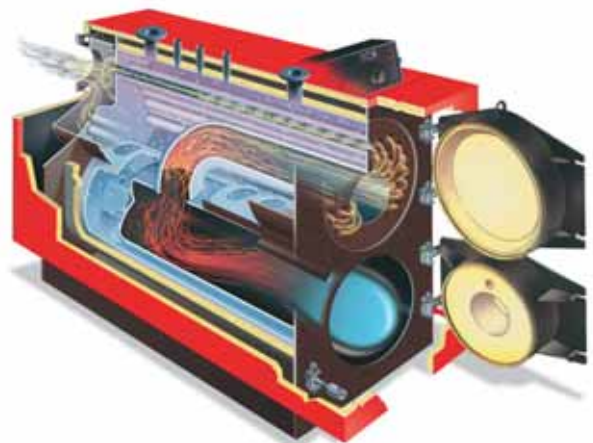


#### GREENOX BT - FORCED DRAUGHT BURNER

##### LOW RETURN TEMPERATURE

High efficiency three pass wet back design with twin chamber and double skin flue gas tubes. This design allows return water temperatures down to 35°C without condensing the flue gasses.

Models from 100 kW to 2000 kW, efficiency of 93% NET.



#### STELT & MONOLITE CONDENSING BOILERS - FORCED DRAUGHT BURNER

★★★★ EFFICIENCY

The Stelt & Monolite range have a very high efficiency MAX 106% which places it at the peak of the classification according to European standards (output directive 92/42/EEC). The reasons for this high efficiency are:

- Recovery of the latent heat by condensation of the water vapour present in the flue gases;
- Extremely low flue temperature, equal to that of the return water temperature plus about 10°C;
- Reduction to a minimum of heat loss through the heater casing.
- The AISI 316 Ti furnace and vertical flues are capable of resisting attacks from acidic condensation.
- Models from 75 kW to 863 kW (output calculated using a water temperature of 40°C/30°C).



## RAYPAK ATMOSPHERIC WATER HEATERS

Raypak are Australia's largest manufacturer of water heaters with atmospheric burners. They range from 32 kW to 960 kW, for both indoor and outdoor installation. Suitable for operation on natural and L.P gas. Some smaller models are supplied with a flue dilution fan.

Because Raypak heaters are compact they are ideal for installation in plant rooms to supply large quantities of hot water for hydronic heating and, when combined with storage tanks, for hot water applications.



The Raypak Commercial/Industrial range of water heaters provide a compact, efficient heating design which is the ideal way to heat large quantities of water for both hot water and hydronic applications. With models ranging from 32 kW to 960 kW, and a gross thermal efficiency of 82% they save on operating costs too.

The Raypak Range is suitable where reliable and economical quantities of hot water are required. They are ideal for large hotels, industrial plants, laundries and mechanical heating.



## EDWARDS COMMERCIAL HOT WATER

Edwards Hot Water manufacture a wide range of commercial water heating equipment to offer you the flexibility and performance you need.

With over 40 years experience in hot water we have a solution for most applications. Our unique indirect heat exchange storage cylinders minimise the possibility of scale build up within the storage tank and solar collectors (if fitted). Other systems do not offer the benefits of our anti-scale system and corrosion protection.

Edwards indirect storage cylinders have the added advantage of having two separate heating circuits. A low pressure treated water circuit which can be used for connection to solar collectors or to mechanical devices for room heating and a mains pressure circuit which does not compromise on the supply pressure to the hot water fixtures.



### COMMERCIAL SOLAR

Edwards has a range of solar collectors to suit every application. The popular Australis Series provides the copper tubes with a pressed aluminium absorber plate coated with a polyester matt black paint for maximum performance. The casing is colorbond with 38mm insulation.

The Titan Series is designed for high performance in cooler climates and incorporates titanium coated copper absorber plates for greater efficiency.

The Edwards solar system has the ability to be installed with a glycol additive to prevent freezing and is guaranteed to minus 15°C. All Edwards Solar Collectors are made in Australia and comply with all relevant Australian standards.

### EDWARDS WARM WATER SYSTEMS

Edwards have been producing Warm Water Systems since the early 1980s. The heaters are manufactured under Watermark Licence W152 and are approved by NSW Health for use as warm water generators. The Edwards systems are designed to provide a warm water temperature at the outlet of between 40.5°C and 43.5°C.

The system comprises a "storage cylinder", a heat source and control box. The cylinder has a heat exchange coil, which, having a small volume, is capable of rapidly responding to change in demand.

Simple in design the Edwards Warm Water System is easy to maintain. Multiple heaters, manifolded together, can be used in an application where it is not possible for a system to be shut down completely.



# ELECTRIC WATER HEATERS & STEAM BOILERS

Simons electric hot water and steam boilers.

A family company established in 1932 Simons has grown and diversified to manufacture a wide range of electric steam and hot water boilers from 2.7 kW to 480 kW.

All elements and controls are side entry and easily accessible - all steam boilers are supplied as a complete packaged unit, factory tested and ready for connection to services.

**SIMONS BOILER COMPANY** has been manufacturing electric steam and hot water boilers in Australia for over 70 years.

All boilers are manufactured to the following International standards:

- Australian
- New Zealand
- A.S.M.E
- British

The steam boilers are ideal where small to medium quantities of steam are required and where other fuels cannot be considered because of availability or ability to flue the boiler.

**SIMONS ELECTRIC STEAM BOILERS** can be installed in any location where sufficient electrical power is available.

They are ideal for use in:

- Dry Cleaners
- Laundries
- Food Processors
- Hospital Sterilizers
- Autoclaves
- Bakeries
- Soil Sterilising
- Bee Keeping
- Clothing Manufacturers
- Pharmaceuticals/Cosmetics
- Universities
- Steam Jacketed Pans
- Humidification
- Hot Water Storage Heaters

**SIMONS ELECTRIC STEAM BOILERS** have a thermal efficiency of 99%, are compact and all working parts are readily accessible. The steam boilers are fully automatic, are supplied complete with pump, only requiring the connection of electricity and water.

There are over thirty models of Simons Electric Boilers available ranging from 2.7 kW to 480kW and operating pressures up to 1600 KPA.

**SIMONS ELECTRIC WATER HEATERS** share exactly the same construction details with the exclusion of the pump and pressure controls which are replaced by thermostats.



ELECTRIC WATER HEATERS & STEAM BOILERS



# SIMONS BOILER CO.



INSTALLATION BY SOLA EDWARDS - SOUTH AUSTRALIA



EDWARDS INSULATED VITREOUS  
ENAMEL LINED AND STAINLESS  
STEEL STORAGE TANKS  
UP TO 1000 LTR CAPACITY



## VAPAC HUMIDIFIERS ARE AVAILABLE in sizes from 1KG/HR to 90 KG/HR

The new vapanet electrode system offers superior quality with reliable trouble free operation.

LE models have a front mounted LED indicator display clearly showing the state of operation.

Other features include:

- User Friendly Display
- Control Interface
- Run and Alarm Signals
- Foaming Protection
- Easy Front Access
- Drain Pump

## DISTRIBUTED BY

### SYDNEY Head Office

755 Botany Road  
Rosebery 2018 NSW - Australia  
Phone: (61 2) 8338 8660  
Fax: (61 2) 8338 8661  
Email: [info@simonsboiler.com.au](mailto:info@simonsboiler.com.au)

### MELBOURNE

34 Strong Avenue  
Thomastown 3074 VIC - Australia  
Phone: (61 3) 9462 6700  
Fax: (61 3) 9462 6711  
Email: [info@simonsboiler.com.au](mailto:info@simonsboiler.com.au)