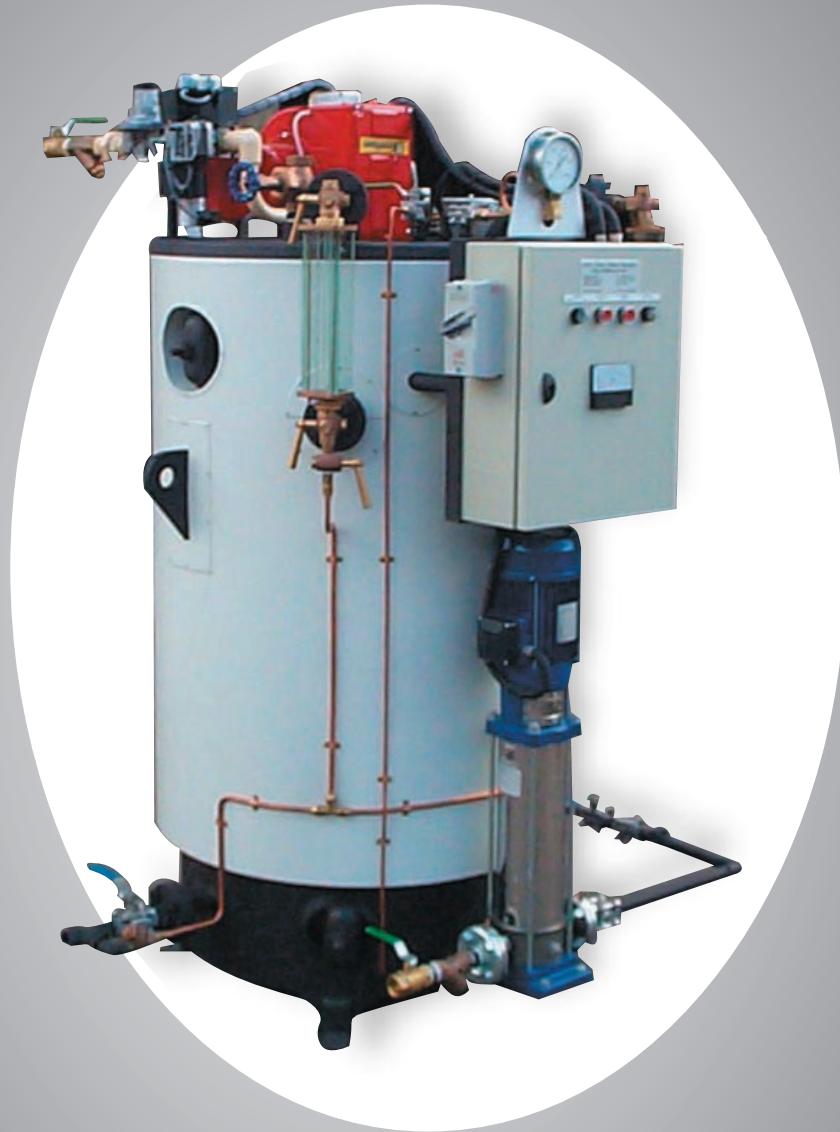




THERMOTECH

INDUSTRIAL BOILERS



Manufactured by:

East Coast Steam P/L

Think Value,
Think Efficiency =
Think Thermotech

Thermotech VWT Series Watertube Boilers

Thermotech is the registered product range of steam generation equipment manufactured by East Coast Steam P/L.

Today's Thermotech VWT range of packaged steam boilers are the product of many years of

All Thermotech boilers are manufactured to the highest standard, with the boiler vessel undergoing 100% non destructive testing during manufacture (the results of which are supplied with the boilers manufacturers data

report at time of manufacture). The VWT boilers have a standard design pressure of 1050kpa, but are supplied fitted out to clients specification.

All Thermotech boilers are engineered to provide a long service life with minimal maintenance requirements.

Thermotech boilers carry a 12 months warranty on controls and peripheral

equipment, and 5 years warranty on the shell, providing the boiler is operated and maintained within relevant Standards, including water treatment.

development, that has been heavily influenced by market requirements, and loaded with features and system options to meet the clients specification.



Dare to Compare

(Thermotech boilers specifications exceed the minimum requirements of relevant codes, and compare favourably to other equipment that is available).

SPACE REQUIREMENTS the VWT range of boilers being vertical down fired design, takes a minimum of valuable floor space.

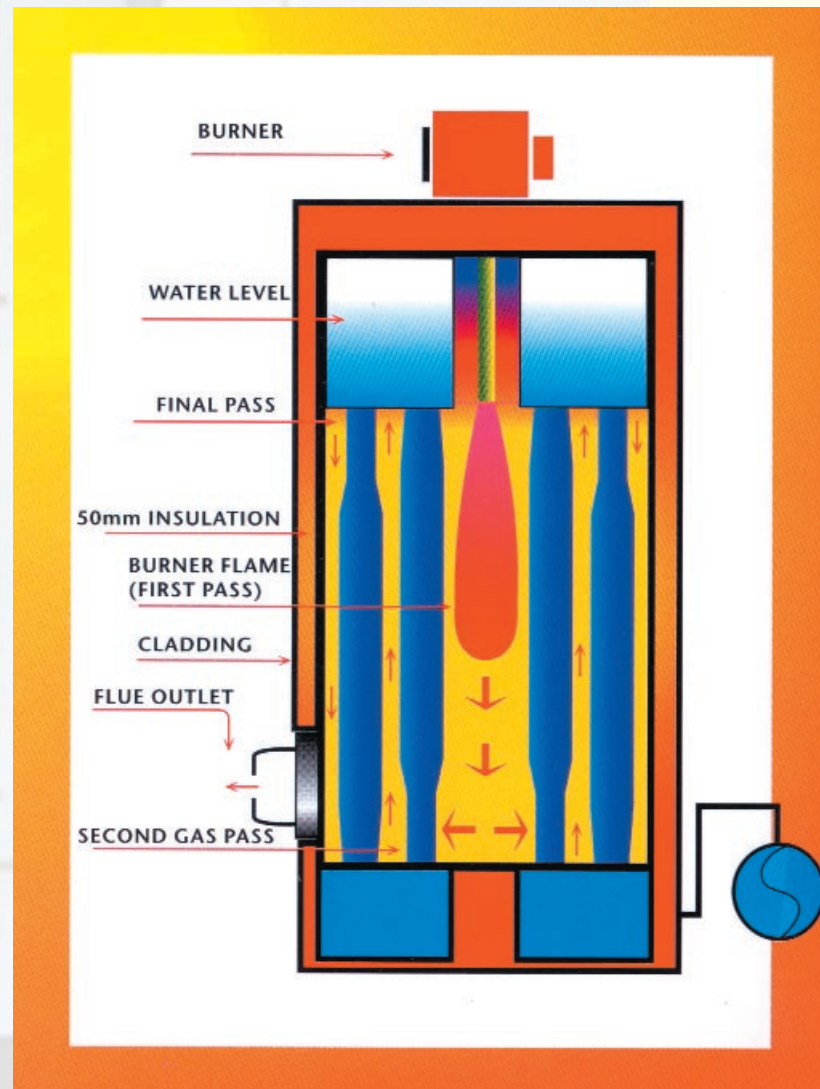
OPERATING COSTS are minimised with the VWT boilers, the 3 pass natural circulation water wall design will provide a guaranteed minimum of 80% efficiency across the operating range of the boiler.

BOILER TICKETS are not required for the VWT range of boilers. Safety features exceed code minimum requirements, with boilers greater than 500 KW being fitted with system diagnostics, and self check functions.

RADIATED HEAT is not a problem with Thermotech boilers, high quality thermal insulation is fitted to the boilers, ensuring a more comfortable workplace, and increased energy efficiency.

QUALITY FITOUT of the VWT boilers has enabled a low cost low maintenance steam boiler that will provide many years of reliable service.

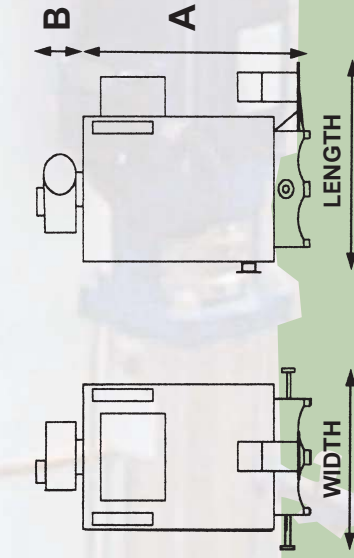
- ❖ LOW CAPITAL COST
- ❖ FULLY WELDED TUBES
- ❖ 3 PASS DESIGN
- ❖ RAPID STARTUP SAVES \$ TIME
- ❖ LOW HEAT EMISSIONS
- ❖ SMALL FLOOR SPACE NEEDED
- ❖ NO BOILER TICKETS REQUIRED



- ❖ QUALITY FITOUT COMPONENTS
- ❖ EASY TO OPERATE
- ❖ EASY TO SERVICE
- ❖ PARTS READILY AVAILABLE

Thermotech VW T Steam Boiler Dimensions

MODEL NUMBER	BOILER HP	BOILER KW	OUTPUT lb/hr	OUTPUT kg/hr	INPUT mj/hr	DIMENSIONS			SHIPPING WEIGHT	FLUE SIZE	STEAM OUTLET	POWER AMPS	WATER INLET	SAFETY VENTS	B/DOWN LINE	FLOODED VOLUME	
						DIAM	WIDTH	LENGTH									
6 VWT	6	60	202	92	270	600	850	950	1300	300	700	125	15	10	20	25	112 L
10 VWT	10	100	339	154	450	700	950	1050	1440	400	900	150	20	10	25	20	212 L
15 VWT	15	150	511	232	675	700	950	1050	1600	400	1000	150	20	10	25	20	240 L
20 VWT	20	200	681	309	900	870	1050	1150	1850	450	1500	200	25	10	25	25	362 L
25 VWT	25	250	850	386	1125	1175	1400	1500	1850	450	2200	200	32	10	25	25	400 L
30 VWT	30	300	1020	463	1350	1175	1400	1500	2050	450	2400	200	32	10	25	25	400 L
35 VWT	35	350	1192	541	1575	1175	1400	1500	2250	450	2400	200	40	10	25	25	400 L
40 VWT	40	400	1358	616	1800	1175	1400	1500	2250	500	2500	200	40	15	25	25	400 L
50 VWT	50	500	1704	773	2250	1300	1550	1650	1930	500	2700	250	40	15	25	25	400 L
60 VWT	60	600	2045	928	2700	1300	1550	1650	2140	650	2750	250	50	15	25	25	400 L
75 VWT	75	750	2557	1160	3375	1300	1550	1650	2410	650	3200	250	50	15	25	32	400 L
100 VWT	100	1000	3410	1547	4500	1400	1650	1800	2340	750	4200	300	65	20	25	32	400 L
125 VWT	125	1250	4312	1956	5471	1500	1800	1900	2600	1100	4400	300	65	20	25	32	400 L
150 VWT	150	1500	5174	2347	6565	1500	1800	1900	2900	1200	4600	300	65	25	25	32	400 L



* Subject to changes without notice.

60 kw boilers single phase power supply only required.

All other boilers require a 3 phase supply, with neutral and earth. Boiler design pressure is 1050 kpa.

Boilers are supplied set up for 700 kpa unless otherwise specified.

Commissioning data sheet must be returned to validate warranty.

Boilers over 500kw have two feed pumps fitted as standard.

Above information is based on propane, natural gas, or diesel fuel.

All boilers are supplied complete with MDR and manuals.

Output is evaporation f & d 100°C

Distributed by:

SIMONS BOILER CO

SYDNEY - 755 Botany Road ROSEBERY Ph. 02 8338 8660

MELBOURNE - 34 Strong Street THOMASTOWN Ph. 03 9462 6700

INTERNET - www.simonsboiler.com.au EMAIL - info@simonsboiler.com.au